



ORGANOD

ICONIC SURFACE DESIGN

& Aesthetics  
& Acoustics

# Aesthetics & Acoustics

Good room acoustics can have a positive effect on concentration, performance and general well-being in the room.

ORGANOID acoustic solutions combine sound-absorbing constructions with real natural materials, creating rooms that impress in terms of atmosphere, design and functionality. Thanks to their natural material properties, all our acoustic products contribute to a pleasant indoor climate.



”

We develop natural acoustic solutions for a wide range of applications – uncompromising in terms of effectiveness, design and materiality.

Christoph Egger, CEO

## Acoustic performance solved naturally – our acoustic products

- 3** Infinity Fine | Bold
- 5** Infinity Sky| Fly | Wall
- 8** Acoustic Panels
- 10** 3D Acoustic Panels
- 12** Acoustic Tiles
- 14** Acoustic Pictures

# Infinity

Infinity is a high-performance **acoustic system for wall and ceiling surfaces** that combines acoustic precision with creative freedom.

The stable carrier plate allows **flexible cutting** and precise adaptation to complex room geometries.

Refined with ORGANOID's handcrafted natural surfaces, Infinity opens up new possibilities for using acoustics not only functionally, but also as an **independent design element**.

Infinity Fine with ALPINE MEADOW light



smooth transitions between panels thanks to **invisible joints** that accommodate material expansion

**sound absorption coefficient** A (depending on substructure and variant)  
according to EN ISO 354-1985

**dimensions** 2790 x 128 mm  
deck width 14 mm Fine | 30 mm Bold  
grooving 2 mm

**fire protection** normally flammable DIN B2 / EN D-s2,d0  
flame-retardant DIN B1 / EN B-s2,d0

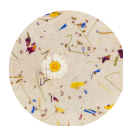
**application** wall & ceiling

**carrier** MDF 16 mm

**decorative coatings**



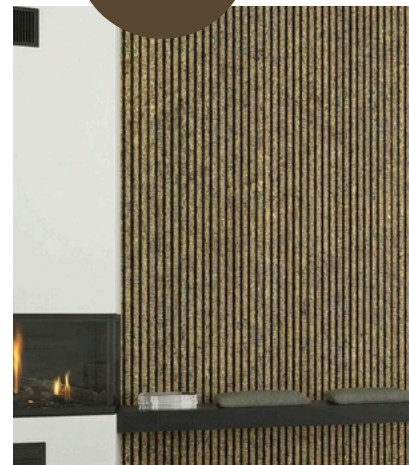
ALPINE  
MEADOW



ALPINE MEADOW  
light

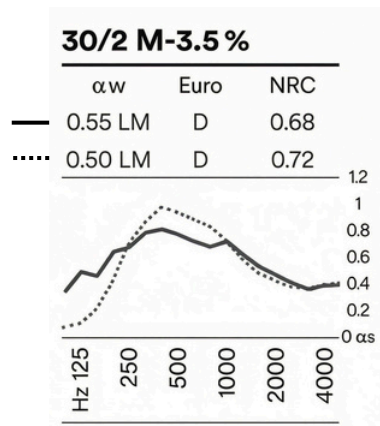
**easy installation** Tongue and groove connection with screw clip

suitable for  
allergy  
sufferers



Infinity Fine with ALPINE MEADOW

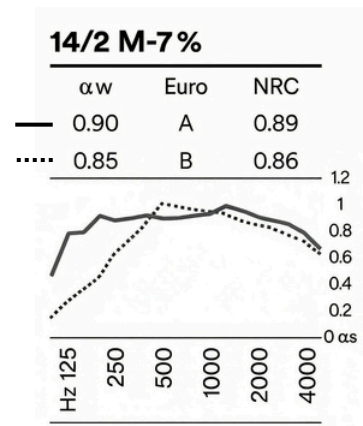
# Infinity Bold



$\alpha_w$  = sound absorption coefficient  
 $\alpha_s$  = terz value  
**Euro** = Euroclasses (A-E)  
**NRC** = Noise Reduction Coefficient (US-Norm)  
 suspension height — 216 mm  
 ..... 56 mm



# Infinity Fine



$\alpha_w$  = sound absorption coefficient  
 $\alpha_s$  = terz value  
**Euro** = Euroclasses (A-E)  
**NRC** = Noise Reduction Coefficient (US-Norm)  
 suspension height — 216 mm  
 ..... 56 mm



## product characteristics Infinity Fine & Bold



acoustically highly effective



flame-retardant (on request)



natural materials



regulate the indoor climate

# Infinity

INFINITY



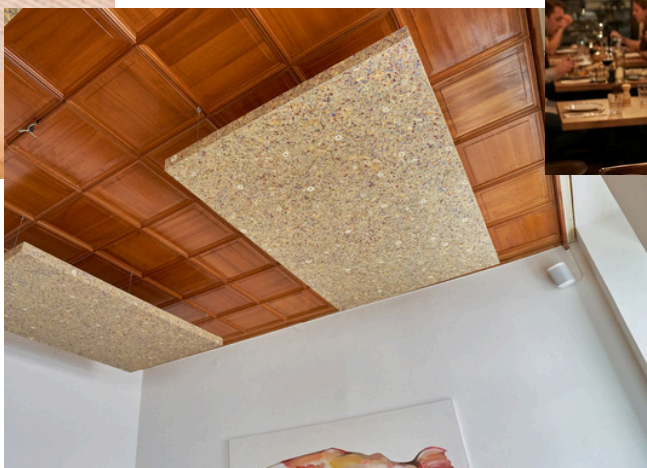
## Infinity Sky

with **WILDSPITZE light**  
(Bauernspeis ©woody Raumakustik by Teamwork)



## Infinity Wall

with **ALPINE MEADOW**



## Infinity Fly

with **ALPINE MEADOW**  
(Reznicek Wien ©woody Raumakustik by Teamwork)

### sound absorption coefficient

A according to EN ISO 354-2003 (depending on substructure and variant)

### dimensions

2000 x 1000 x 76 mm  
deck width 13 mm  
grooving 3 mm

### application

Sky ceiling absorber  
Fly ceiling sail  
Wall wall absorber

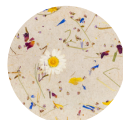
### carrier

MDF 19 mm

### decorative coatings



ALPINE  
MEADOW



ALPINE MEADOW  
light

## product characteristics Infinity Sky, Fly & Wall



acoustically  
highly effective



natural  
materials



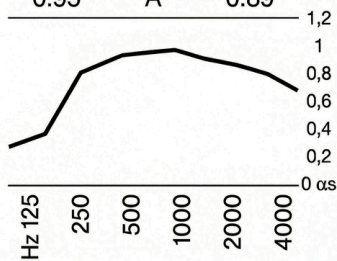
ready for  
installation



regulate the  
indoor climate

### Infinity Sky & Wall

$\alpha_w$	Euro	NRC
0.95	A	0.89



$\alpha_w$  = sound absorption coefficient

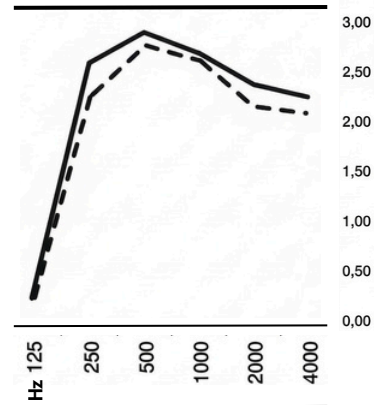
$\alpha_s$  = terz value

Euro = Euroclasses (A-E)

NRC = Noise Reduction Coefficient (US-Norm)

### Infinity Fly

Equivalent sound absorption area  
AObj (m<sup>2</sup>) above the frequency F (Hz)



— AObj (Terz)

- - - - - AObj. (Oktav)

The acoustic effectiveness depends on the design. The measurements are based on 50 mm insulation and no air gap during installation.

The acoustic effectiveness depends on the structural design. The measurements are based on insulation of 50 mm and an air gap of 200 mm during installation.

# Active Core

Our **Active Core** forms the absorber core of the Acoustic Panels, 3D Acoustic Panels, Acoustic Tiles and Acoustic Pictures and consists of a combination of **hemp fibres and a binding agent**. This combination of materials ensures stability, and effective sound absorption.

The Active Core is biodegradable. Despite its natural fibre content, Active Core can be processed in the same way as PET. It can be edited using existing machinery, making it a sustainable solution for a wide range of acoustic designs and solutions.

**Processing** is straightforward:



die cutting



sawing



waterjet cutting



manual cutting



digital cutting

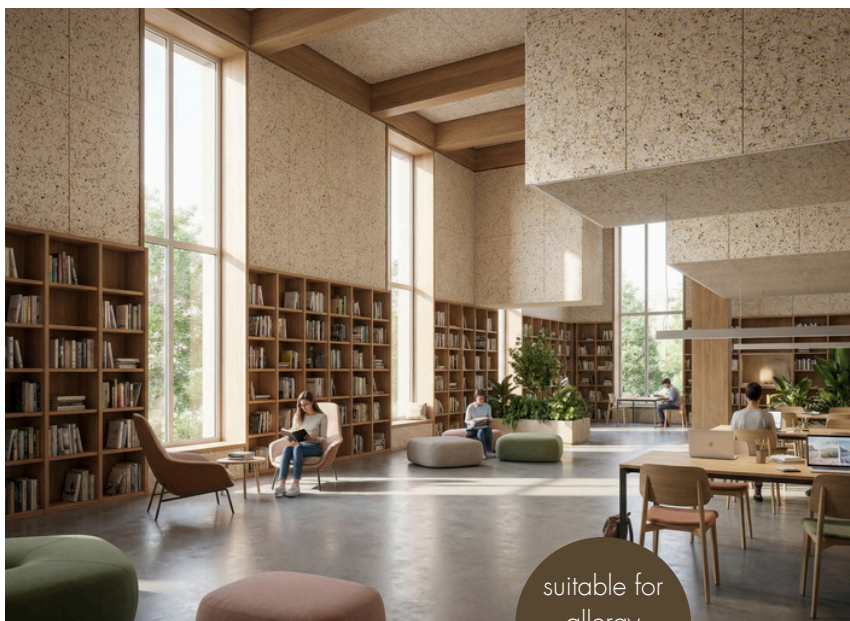


# Acoustic Panels

Our acoustic panels from the Balance series are made from natural fibres such as hemp and flax, as well as a binding component that is free from harmful substances and biodegradable – our **Active Core**.

**Flexible processing** enables customised cuts and opens up a high degree of design freedom. Different formats, complex geometries and diverse surfaces can be implemented with precision.

Acoustic Panels with **ALPINE MEADOW light**



suitable for allergy sufferers

## Test reports Acoustic Panels

Test	aw	Euro	NRC	decorative coating
10 mm thickness   no air gap	0.30	D	0.45	ALPINE MEADOW light
10 mm thickness   40mm insulation	1.00	A	0.95	ALPINE MEADOW light
10 mm thickness   no air gap	0.30	D	0.45	WOOL
10 mm thickness   40 mm insulation	1.00	A	0.95	WOOL
10 mm thickness   no air gap	0.25	E	0.35	PURE
10 mm thickness   40mm insulation	1.00	A	0.95	PURE
20 mm thickness   no air gap	0.65	D	0.85	ALPINE MEADOW light
20 mm thickness   40 mm insulation	1.00	A	1.00	ALPINE MEADOW light
20 mm thickness   no air gap	0.55	D	0.75	WOOL
20 mm thickness   40 mm insulation	1.00	A	1.00	WOOL
20 mm thickness   no air gap	0.45	D	0.60	PURE
20 mm thickness   40 mm insulation	1.00	A	1.00	PURE

**aw** = sound absorption coefficient

**Euro** = Euroclasses (A-E)

**NRC** = Noise Reduction Coefficient (US-Norm)

**Insulation** = Sheep's wool insulation

Acoustic Panels with **ALPINE MEADOW light**



The acoustic effectiveness depends on the structural design, in particular on the thickness of the Active Core.

An additional air gap during installation can significantly increase the absorption performance.

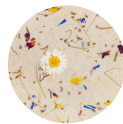
**sound absorption coefficient** A according to EN ISO 354  
(depending on the system configuration)

**dimensions** thickness: 10 mm | 20 mm  
formats: 3050 x 1300 mm  
2390 x 1200 mm  
2390 x 600 mm

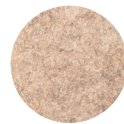
**application** wall & ceiling

**absorber core** Active Core

**decorative coatings**



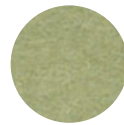
ALPINE MEADOW  
light



PURE



WOOL  
white



WOOL  
sage green

**biodegradable** 93,8 % according to ASTM D5511 | EN ISO 15985

## product characteristics Acoustic Panels



acoustically  
highly effective



natural  
materials



regulate the  
indoor climate



biodegradable

# 3D Acoustic Panels

The 3D Acoustic Panels transform wall surfaces into **sculptural design highlights**.

With their generous format, they create depth, structure and a **strong visual presence** – while effectively improving room acoustics. Ideal as an eye-catcher for rooms that are meant to make an impression.

The **Active Core** absorber core consists of hemp fibres and a binding agent. Our 3D panels are biodegradable and manufactured without harmful ingredients.

Due to the 3D structure, there is a varying air gap to the wall, which means that the measured values differ locally. The acoustic effect of the entire panel system is decisive.

The three-dimensional shape creates **strong visual accents** and at the same time improves the **acoustic quality** of the room.


## Design, that changes rooms acoustically



3D panel with **WOOL white**



3D panels with **WOOL white**

sound absorption coefficient	A according to EN ISO 354 (depending on the system configuration)
dimensions	2390 x 790 x 10 mm
application	wall
absorber core	Active Core
decorative coatings	
biodegradable	93,8 % according to ASTM D5511   EN ISO 15985

## product characteristics 3D Acoustic Panels



acoustically  
highly effective



natural  
materials



regulate the  
indoor climate



biodegradable

# Acoustic Tiles

different  
V-Cuts  
available

Our Acoustic Tiles offer an effective way to improve room acoustics in a targeted manner while also allowing for **creative freedom**. The individual elements can be flexibly combined with one another, enabling customised wall or surface designs.

The core of Acoustic Tiles consists of our **Active Core** – an acoustically effective mixture of hemp fibres and a binding component. The structure is biodegradable and contains no harmful substances.

**Different V-Cut structures** create different surfaces and patterns that have both acoustic and design effects. Individual elements can be used to create calm surfaces, graphic structures or lively wall pictures.



Acoustic Tiles with ALPINE MEADOW light

Acoustic performance depends on the structural design. Our measurement data is based on a large test area; values may vary in individual applications. An additional air gap during installation can significantly increase absorption performance.

## Test reports Acoustic Tiles

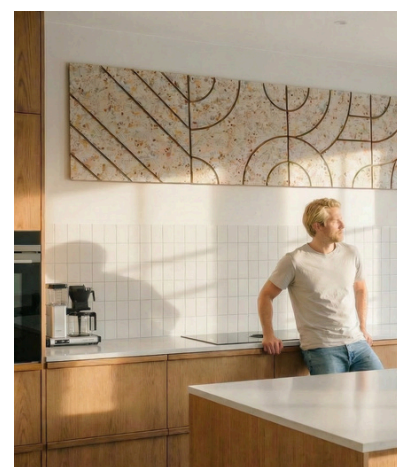
Test	$\alpha_w$	EURO	NRC	decorative coatings
20 mm thickness   no air gap	0.65	D	0.85	ALPINE MEADOW light
20 mm thickness   40 mm insulation	1.00	A	1.00	ALPINE MEADOW light
20 mm thickness   20 mm air gap	0.65	C	0.85	ALPINE MEADOW light
20 mm thickness   no air gap	0.55	D	0.75	WOOL
20 mm thickness   40 mm insulation	1.00	A	1.00	WOOL

$\alpha_w$  = sound absorption coefficient

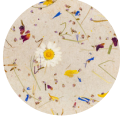


**Euro** = Euroclasses (A-E)

**NRC** = Noise Reduction Coefficient (US-Norm)

**Insulation** = Sheep's wool insulation



Acoustic Tiles with ALPINE MEADOW light

sound absorption coefficient	A according to EN ISO 354 (depending on the system configuration)	
dimensions	600 x 600 x 20 mm	
application	wall & ceiling	
absorber core	Active Core	
decorative coatings	 <p>ALPINE MEADOW light</p>	 <p>WOOL white</p>
	 <p>WOOL sage green</p>	
biodegradable	93,8 % according to ASTM D5511   EN ISO 15985	

## product characteristics Acoustic Tiles



acoustically  
highly effective



natural  
materials



regulate the  
indoor climate



biodegradable



# Acoustic Pictures

Our Acoustic Pictures combine first-class sound absorption with natural, sustainable materials, creating **ideal acoustics and an optimised indoor climate.**

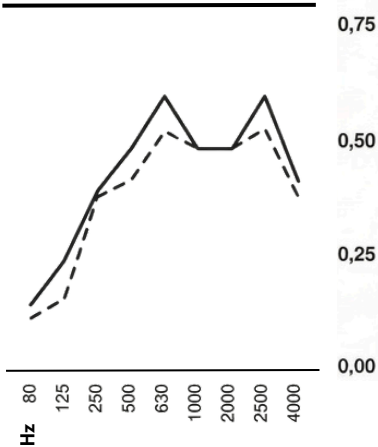
At the heart of the product is our **Active Core**: an acoustically effective core made of hemp fibres, supplemented by a binding agent. This combination of materials ensures effective sound absorption, contains no harmful substances and is also biodegradable.



Acoustic Picture with folded-down frame  
(© City of Wiltz – Luxembourg)

## Acoustic Pictures 1200 x 600 mm

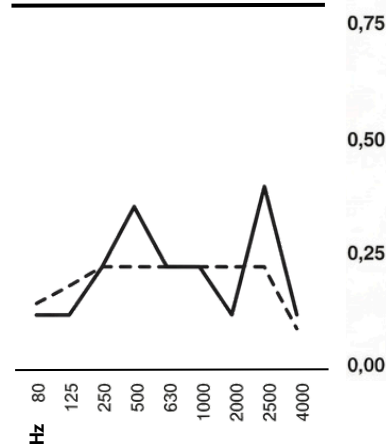
Equivalent sound absorption area  
AObj (m<sup>2</sup>) above the frequency F (Hz)



— AObj (Terz)  
- - - AObj. (Oktav)

## Acoustic Pictures 600 x 600 mm

Equivalent sound absorption area  
AObj (m<sup>2</sup>) above the frequency F (Hz)

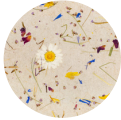




— AObj (Terz)  
- - - AObj. (Oktav)

Acoustic Picture with **ALPINE MEADOW light**, black wooden frame



The acoustic performance depends on the structural design. The measurements are based on a 20 mm Active Core and a 20 mm air gap.

dimensions	600 x 600 x 40 mm 1200 x 600 x 40 mm
application	wall
absorber core	Active Core
decorative coatings	 ALPINE MEADOW light
frame	 folded-down frame  Black wooden frame
biodegradable	93,8 % according to ASTM D5511   EN ISO 15985

## product characteristics Acoustic Pictures



acoustically  
highly effective



natural  
materials



regulate the  
indoor climate



biodegradable



**ORGANOID**

**ICONIC SURFACE DESIGN**

ORGANOID GmbH

**Headquarters &  
Manufactory:**

Nesselgarten 422  
6500 Fliess  
Austria

**Sales Office:**

Kaiserjägerstraße 4a  
6020 Innsbruck  
Austria

+43 5449 200 01 | [info@organoids.com](mailto:info@organoids.com) | [www.organoids.com](http://www.organoids.com)



Company with financial

**climate contribution**

[ClimatePartner.com/11794-1705-1001](https://climatepartner.com/11794-1705-1001)