



ORGANOP

Aesthetics & Acoustics



Aesthetics & Acoustics

Good room acoustics can have a positive effect on concentration, performance and general well-being in the room.

ORGANOID acoustic solutions combine sound-absorbing constructions with real natural materials, creating rooms that impress in terms of atmosphere, design and functionality. Thanks to their natural material properties, all our acoustic products contribute to a pleasant indoor climate.



”

We develop natural acoustic solutions for a wide range of applications – uncompromising in terms of effectiveness, design and materiality.

Christoph Egger, CEO

Acoustic performance solved naturally – our acoustic products

3 Infinity Fine | Bold

5 Infinity Sky| Fly | Wall

8 Acousticpanels

10 3D Acousticpanels

12 Acoustic Tiles

14 Acoustic Pictures

Infinity

INFINITY

Infinity is a **high-performance acoustic system for wall and ceiling surfaces** that combines acoustic precision with creative freedom.

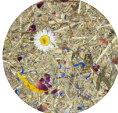
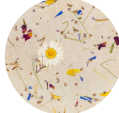
The stable carrier plate allows **flexible cutting** and precise adaptation to complex room geometries.

Refined with ORGANOID's handcrafted natural surfaces, Infinity opens up new possibilities for using acoustics not only functionally, but also as an **independent design element**.

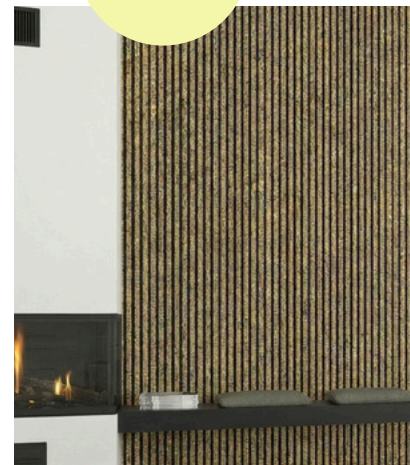
Infinity Fine with ALPINE MEADOW light



smooth transitions between panels thanks to invisible joints that accommodate material expansion

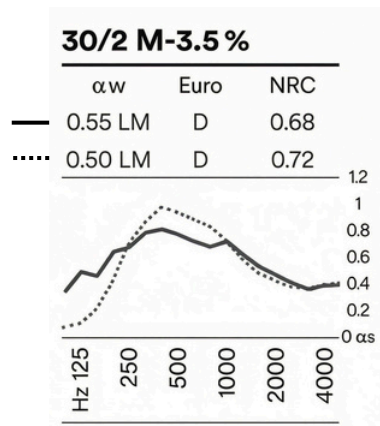
sound absorption coefficient	A (depending on substructure and variant) according to EN ISO 354-1985
dimensions	2780 x 128 mm deck width 14 mm Fine 30 mm Bold grooving 2 mm
fire protection	normally flammable DIN B2 / EN D-s2,d0 flame-retardant DIN B1 / EN B-s2,d0
application	wall & ceiling
carrier	MDF 16 mm
decorative coatings	 ALPINE MEADOW  ALPINE MEADOW light
easy installation	Tongue and groove connection with screw clip

suitable for allergy sufferers

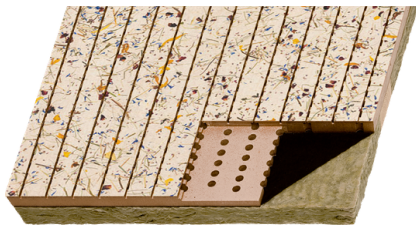


Infinity Fine with ALPINE MEADOW

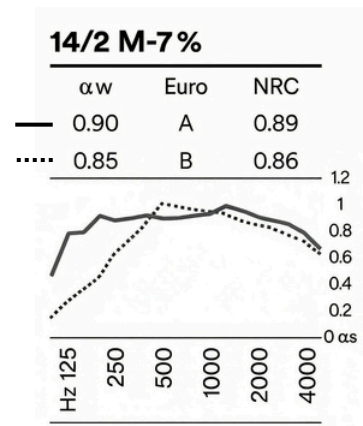
Infinity Bold



α_w = sound absorption coefficient
 α_s = terz value
 Euro = Euroclasses (A-E)
 NRC = Noise Reduction Coefficient (US-Norm)
 suspension height — 216 mm
 56 mm



Infinity Fine



α_w = sound absorption coefficient
 α_s = terz value
 Euro = Euroclasses (A-E)
 NRC = Noise Reduction Coefficient (US-Norm)
 suspension height — 216 mm
 56 mm



product characteristics Infinity Fine & Bold



acoustically
highly effective



flame-retardant
(on request)



natural
materials



regulate the
indoor climate

Infinity

INFINITY



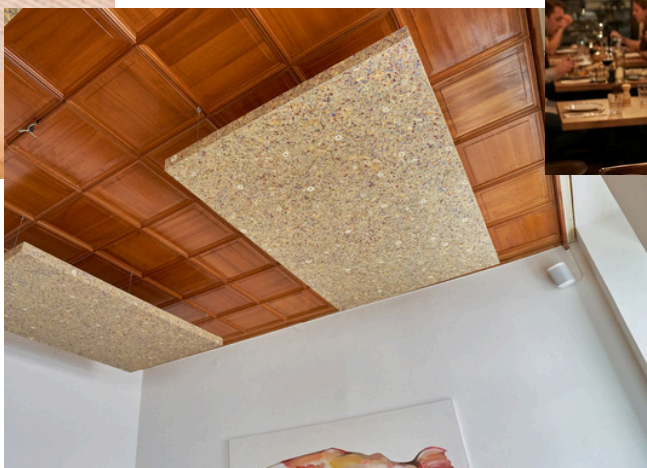
Infinity Sky

with WILDSPITZE light
(Bauernspeis @woody Raumakustik by Teamwork)



Infinity Wall

with ALPINE MEADOW



Infinity Fly

with ALPINE MEADOW
(Reznicek Wien @woody Raumakustik by Teamwork)

sound absorption coefficient A according to EN ISO 354-2003 (depending on substructure and variant)

dimensions 2000 x 1000 x 76 mm
deck width 13 mm
grooving 3 mm

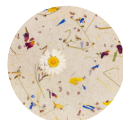
application Sky ceiling absorber
Fly ceiling sail
Wall wall absorber

carrier MDF 19 mm

decorative coatings



ALPINE
MEADOW



ALPINE
MEADOW
light

product characteristics Infinity Sky, Fly & Wall



acoustically
highly effective



natural
materials



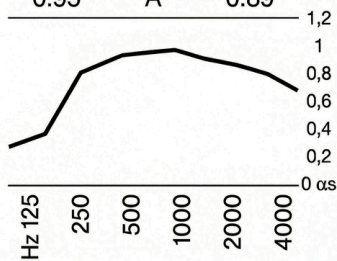
ready for
installation



regulate the
indoor climate

Infinity Sky & Wall

α_w	Euro	NRC
0.95	A	0.89



α_w = sound absorption coefficient

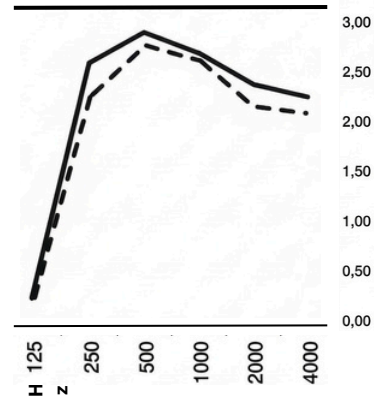
α_s = terz value

Euro = Euroclasses (A-E)

NRC = Noise Reduction Coefficient (US-Norm)

Infinity Fly

Equivalent sound absorption area
AObj (m²) above the frequency F (Hz)



— AObj (Terz)

- - - - - AObj. (Oktav)

The acoustic effectiveness depends on the design. The measurements are based on 50 mm insulation and no air gap during installation.

The acoustic effectiveness depends on the structural design. The measurements are based on insulation of 50 mm and an air gap of 200 mm during installation.

Active Core

Our Active Core forms the absorber core of the Acoustic Panels, 3D Acoustic Panels, Acoustic Tiles and Acoustic Pictures and consists of a combination of **hemp fibres and a binding agent**. This combination of materials ensures stability, and effective sound absorption.

The Active Core is biodegradable. Despite its natural fibre content, Active Core can be processed in the same way as PET. It can be edited using existing machinery, making it a sustainable solution for a wide range of acoustic designs and solutions.

Processing is straightforward:



die cutting



sawing



waterjet cutting



manual cutting



digital cutting



Acoustic Panels

Our Acoustic Panels from the Balance series are made from natural fibres such as hemp and flax, as well as a binding component that is free from harmful substances and biodegradable – our **Active Core**.

Flexible processing enables customised cuts and opens up a high degree of design freedom. Different formats, complex geometries and diverse surfaces can be implemented with precision.

Acoustic Panels with ALPINE MEADOW light



suitable for allergy sufferers

Test reports Acousticpanels

Test	α_w	Euro	NRC	decorative coating
10 mm thickness no air gap	0.30	D	0.45	ALPINE MEADOW light
10 mm thickness 40mm insulation	1.00	A	0.95	ALPINE MEADOW light
10 mm thickness no air gap	0.30	D	0.45	WOOL
10 mm thickness 40 mm insulation	1.00	A	0.95	WOOL
10 mm thickness no air gap	0.25	E	0.35	PURE
10 mm thickness 40mm insulation	1.00	A	0.95	PURE
20 mm thickness no air gap	0.65	D	0.85	ALPINE MEADOW light
20 mm thickness 40 mm insulation	1.00	A	1.00	ALPINE MEADOW light
20 mm thickness no air gap	0.50	D	0.75	WOOL
20 mm thickness 40 mm insulation	1.00	A	1.00	WOOL
20 mm thickness no air gap	0.45	D	0.60	PURE
20 mm thickness 40 mm insulation	1.00	A	1.00	PURE

α_w = sound absorption coefficient

Euro = Euroclasses (A-E)

NRC = Noise Reduction Coefficient (US-Norm)

Insulation = Sheep's wool insulation

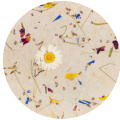



The acoustic effectiveness depends on the structural design, in particular on the thickness of the Active Core.

An additional air gap during installation can significantly increase the absorption performance.

Acoustic Panels with ALPINE MEADOW light





sound absorption coefficient	A according to EN ISO 354 (depending on the system configuration)
application	wall & ceiling
dimensions	10 mm 20 mm 580 x 2320 mm 1160 x 2320 mm
absorber core	Active Core
decorative coatings	 ALPINE MEADOW light  PURE  WOOL white  WOOL sage green
biodegradable	93,8 % according to ASTM D5511 EN ISO 15985

product characteristics Acoustic Panels



acoustically highly effective



natural materials



regulate the indoor climate



biodegradable

3D Acoustic Panels

The 3D Acoustic Panels transform wall surfaces into **sculptural design highlights**.

With their generous format, they create depth, structure and a **strong visual presence** – while effectively improving room acoustics. Ideal as an eye-catcher for rooms that are meant to make an impression.

The **Active Core** absorber core consists of hemp fibres and a binding agent. Our 3D panels are biodegradable and manufactured without harmful ingredients.

The three-dimensional shape creates strong visual accents and at the same time improves the acoustic quality of the room.



3D Acoustic Panel with WOOL sage green



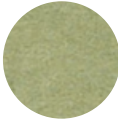
Due to the 3D structure, there is a varying air gap to the wall, which means that the measured values differ locally. The acoustic effect of the entire panel system is decisive.

Design, that changes rooms acoustically



3D Acoustic Panels with WOOL white



sound absorption coefficient	A according to EN ISO 354 (depending on the system configuration)
dimensions	2390 x 790 x 10 mm
application	wall
absorber core	Active Core
decorative coatings	 PURE  WOOL white  WOOL sage green
biodegradable	93,8 % according to ASTM D5511 EN ISO 15985

product characteristics 3D Acoustic Panels



acoustically highly effective



natural materials



regulate the indoor climate



biodegradable

Acoustic Tiles

Our Acoustic Tiles offer an effective way to improve room acoustics in a targeted manner while also allowing for **creative freedom**. The individual elements can be flexibly combined with one another, enabling customised wall or surface designs.

The core of Acoustic Tiles consists of our **Active Core** – an acoustically effective mixture of hemp fibres and a binding component. The structure is biodegradable and contains no harmful substances.

Different V-Cut structures create different surfaces and patterns that have both acoustic and design effects. Individual elements can be used to create calm surfaces, graphic structures or lively wall pictures.

Acoustic performance depends on the structural design. Our measurement data is based on a large test area; values may vary in individual applications. An additional air gap during installation can significantly increase absorption performance.

Test reports Acoustic Tiles

Test	α_w	EURO	NRC	decorative coatings
20 mm thickness no air gap	0.50	D	0.75	ALPINE MEADOW light
20 mm thickness 40 mm insulation	1.00	A	1.00	ALPINE MEADOW light
20 mm thickness no air gap	0.55	D	0.75	WOOL
20 mm thickness 40 mm insulation	1.00	A	1.00	WOOL

α_w = sound absorption coefficient

Euro = Euroclasses (A-E)

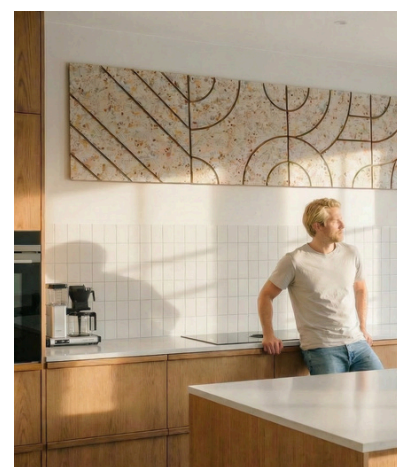
NRC = Noise Reduction Coefficient (US-Norm)

Insulation = Sheep's wool insulation

different
V-Cuts
available

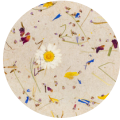




Acoustic Tiles with ALPINE MEADOW light



Acoustic Tiles with ALPINE MEADOW light



sound absorption coefficient	A according to EN ISO 354 (depending on the system configuration)
application	wall & ceiling
dimensions	580 x580 x 20 mm
absorber core	Active Core
decorative coatings	 ALPINE MEADOW light  WOOL white  WOOL sage green
biodegradable	93,8 % according to ASTM D5511 EN ISO 15985

product characteristics Acoustic Tiles



acoustically highly effective



natural materials



regulate the indoor climate



biodegradable



Acoustic Pictures

Our Acoustic Pictures combine first-class sound absorption with natural, sustainable materials, creating **ideal acoustics and an optimised indoor climate.**

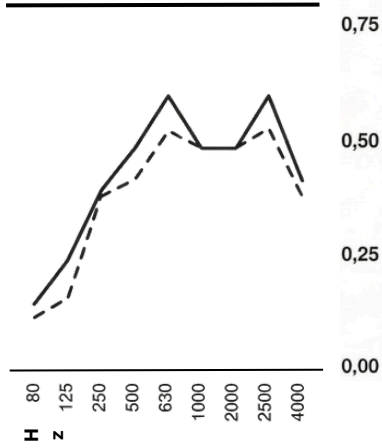
At the heart of the product is our **Active Core**: an acoustically effective core made of hemp fibres, supplemented by a binding agent. This combination of materials ensures effective sound absorption, contains no harmful substances and is also biodegradable.



Acoustic Picture with folded-down frame
(© City of Wiltz – Luxembourg)

Acoustic Pictures 1200 x 600 mm

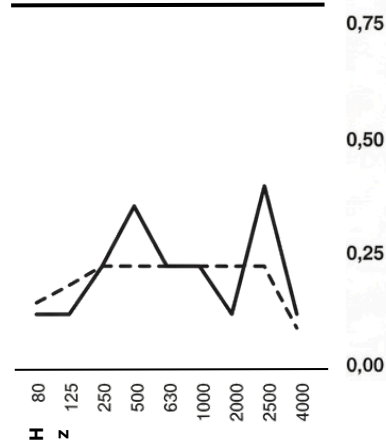
Equivalent sound absorption area
AObj (m²) above the frequency F (Hz)



— AObj (Terz)
- - - AObj. (Oktav)

Acoustic Pictures 600 x 600 mm

Equivalent sound absorption area
AObj (m²) above the frequency F (Hz)



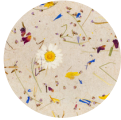


— AObj (Terz)
- - - AObj. (Oktav)

Acoustic Picture with ALPINE
MEADOW light, black wooden frame



The acoustic performance depends on the structural design. The measurements are based on a 20 mm Active Core and a 20 mm air gap.



dimensions	600 x 600 x 40 mm 1200 x 600 x 40 mm
application	wall
absorber core	Active Core
decorative coatings	 ALPINE MEADOW light
frame	 folded-down frame  Black wooden frame
biodegradable	93,8 % according to ASTM D5511 EN ISO 15985

product characteristics Acoustic Pictures



acoustically
highly effective



natural
materials



regulate the
indoor climate



biodegradable



Aesthetics & Acoustics

ORGANOID GmbH

Headquarters &
Manufactory:
Nesselgarten 422
6500 Fliess
Austria

Sales Office:
Kaiserjägerstraße 4a
6020 Innsbruck
Austria

+43 5449 200 01 | info@organoids.com | www.organoids.com



Company with financial
climate contribution
ClimatePartner.com/11794-1705-1001